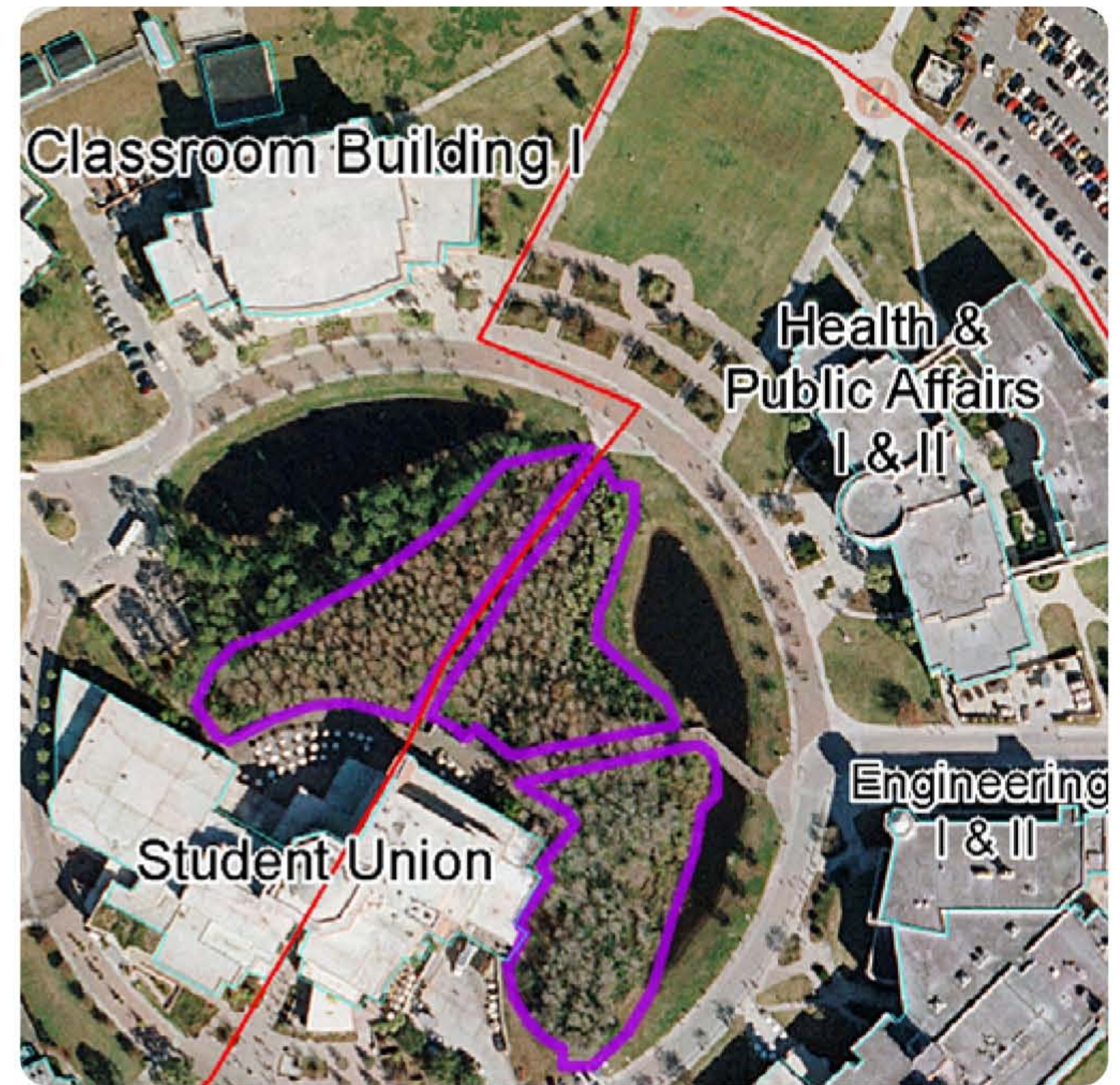


Cypress Dome

Forested wetlands (swamps) that are dominated by bald cypress and/or pond cypress are called cypress domes. Generally these are shallow circular depression wetlands with a vaulted canopy because smaller trees grow in the shallower waters at the outer edge. Pond cypress usually dominates these dome swamps in pine flatwoods with mucky, organic soils. Swamp gum, red maple, sweetbay (magnolia), dahoon holly, swamp bay and slash pine may also be found in the canopy.

Dome Swamps typically develop in sandy flatwoods and in karst areas where subsurface collapse has created a sink. Soils are composed of peat and are often underlain with acidic sands and limestone. Groundcover plants are sparse due to prolonged inundation of these landscapes. Typical hydrologic indicators include algal mats, aquatic mosses and liverworts, aquatic plants, elevated lichen lines, evidence of aquatic fauna, morphological plant adaptations such as buttressed roots or swollen trunks, tussocks, and high-water marks.



Fauna: Cottonmouth, Swallow Tail Kite, Pileated Woodpecker, Cottonmouth, Salamander, Northern Gray Squirrel.